

Sobre AungCrown

“Any brand we made is ours,
we care it and concern it.”



produtos descrição

Item	couro logotipo camurça brim denim snapback chapéus fábrica personalizada
logotipo	crachá de metal / logotipo personalizado
Material	Tecido de veludo cotelê / por medida
Forma de pagamento	Paypal / Pagamento Seguro / T / T etc.
Tempo da amostra	3-5 dias de trabalho
MOQ	50 peças
Sexo	Unisex
Cor	Cor customizada
Tamanho	Um ajuste do tamanho
Fecho	Fivela de plástico / pulseira de Couro / Nylon Strap etc.



QUALITY CLOTHES
Reason
1985
BUILT TO HARD WORK







Nossos serviços

- O projeto do OEM ou do ODM pode disponível
- Todo o logotipo, materiais pode ser personalizado
- Taxa da amostra seria devolvido após a ordem confirmada.
- Após as vendas, se você tiver qualquer problema pls nos dizer, nós faremos qualquer coisa para fornecê-lo.
- Nós fornecemos uma variedade de tampas de qualidade & Chapéus (por exemplo: boné de beisebol, boné de snapback, boné de 5 painéis, boné de golfe, boné esportivo, boné lavado, boné bordado, boné de estampa, pala para sol, gorro, chapéu militar e chapéu) chosed.

A LETTER TO OUR CUSTOMER



Dear Customer,

A new year has been on its way with all moving smoothly and happily.

With your sincerely support and trust, we are more vigorous and confident.

Thanks again!

A group of young here, work together, help each other,

share experience and happiness on each day,

with the same mind strongly in heart that how to help you grow up,

how to help you to be successful, and how to help you to be more stronger.

Do you want one of them to help you?

Time flies with the world's step; hat has become one symbol of fashion culture.

To show people's happiness, belief, kindness.... It can be seen here and there.

It is our honor that we choose this line and share it to all over the world

with our elaborate work.

Not just to show a high quality hat, also the beliefs for spreading the cultural.

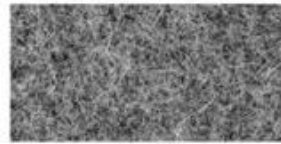
Welcome you to join this potential market at any time!



Aung Crown Group.



COTTON CANVAS
Strong, rough, tightly woven cotton fabric



MELTON WOOL
Fine, soft, curly fabric with a distinct texture, look and feel



NYLON
Tough lightweight synthetic fiber based fabric, durable and flexible



DENIM
Ultra-thick cotton twill patterned fabric. Same material as blue jeans



CORDUROY
Thick cotton fabric with velvety ribs



ACRYLIC
Synthetic fiber based fabric. Often used for bucket hats



SUEDE
Soft leather with a napped exterior surface



HERRINGBONE
Classic wool patterned fabric. Great for any hat



FOAM
Soft porous material commonly used for sublimation or heat press.



TRUCKER MESH
Choose between firm or soft mesh as an option for any of the panels.



COTTON TWILL
Cotton fabric woven with diagonal parallel ridges



POLY-TWILL
Polyester fabric woven with diagonal parallel ridges



3D EMBROIDERY



2D EMBROIDERY



WOVEN KABEK PATCH/
PRINT LABEL PATCH



WOVEN LABEL



WOVEN PATCH



LEATHER PATCH



SCREEN PRINTING



HEAT PRESS



APPLIQUE WITH
TOWEL



PRINT CORK PATCH



METAL BADGE



SUBLIMATION



Dude same! This order was beyond all expectations.



Just leaving the show hahahaha
The quality was higher than normal
Detail was perfect
I can't thank you all enough
Really beautiful production

And I am really thank you for all your trust and support :)))



2017年11月3日

If you want to take the hat I sent apart for measuring that is fine. I can also send you more.

why you always think we can help you to do the hats?
although we make your hats wrong
I am very curiously

The quality you sent me was very good as samples. The hats you sent were very good quality it was a manufacturing mistake that put us in this spot. So the hat was very close we just need to re-measure the triables and the hat would be great.
The 3D embroidery was awesome on the front of our hats. Better quality than what we get from the couple big brands we sell.

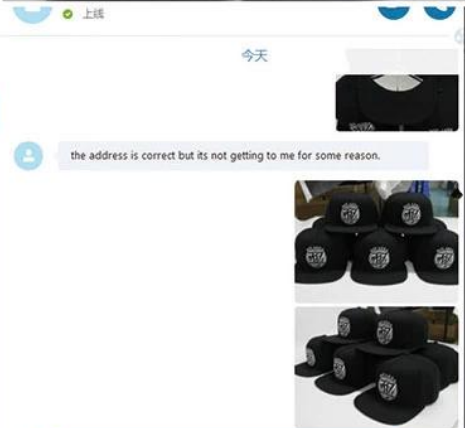


Re: Re: Re: Beanie Pictures

发件人: Mr. Jonathan Belloro
收件人: sales1@accap.com
日期: 2018-01-09 05:51:42

Hi aimee, yes I did received the beanie today.
I am more than satisfied with the quality of the stitching.
Well Done!!
Super Fast Shipping !!
I Will Continue To do business with You!!
Im Glad To have found real professionals !!!

Thank you very much...
Looking forward To make business with you again !!!



Jessie these are beautiful!!!! I could not be more pleased with the work that was done for these caps! You and your staff are the BEST!!! Please send when they are ready to ship! They are perfect!!!! Thank you so very much, I very much look forward to doing more projects with you! 🍎

Dear, received all caps? 21:12 ✓
They have arrived to the country according to DHL but I won't get them until after about three hours. I will pick them up then 😊 21:13

OK, understand. Thank you! 21:14 ✓
🍏🍏🍏🍏 21:14 ✓

But both clients have received the hats that have come and both clients are very happy. So this test run has been a great success and I am ready to move forward with you as my provider for hats. Next step for me is to finish my website and after that I will contact all the sport clubs in Iceland and try to sell them customized headwear. 21:18

Hopefully soon in January I will have more clients and will make more orders from you 😊. 21:18

Here are sample pictures, please check them.

**If you want to know more or have any questions
feel free to contact us**

Perguntas frequentes

Q: qual é o seu MOQ?

Um: depende do seu projeto, geralmente o MOQ é 50 pcs, enquanto nós também podemos fazer menor quantidade para você.

Q: você fornece amostra grátis?

A: claro, por favor, diga-nos o seu boné desejado, então vamos encontrar chapéu semelhante para você, e a taxa de envio é aquele que você termina.

Q: Posso pedir uma amostra antes da produção em massa?

A: claro. A taxa da amostra depende do seu design.

P: Posso encomendar chapéus com o meu próprio design & logotipo? Como?

A: Claro, por favor, nos forneça seu próprio design & logotipo, nosso designer profissional vai fazer um mock-up para sua referência.

P: Em quanto tempo posso obter uma amostra?

Um: tempo da amostra precisa de 5-7 dias, tempo em massa precisa 15-20days.