

About AungCrown

The same is the hat, why choose Aungcrown? Want to know why?

cotton

It is made of high-density and high-density combed cotton and flat plain weave. It has excellent elasticity and breathability, and gives the product a good stiffness and feel.

type

Fitted with ergonomic aesthetic structure design, carefully selected excellent fabrics, accessories are just right, the teacher's car board test, and strive to make the version more stereo, not easy to deform.

color

Adopting natural environmental protection printing technology to achieve the European standard environmental protection standards, testing up to 4-5 color fastness, can withstand the test of the spring and summer sun.

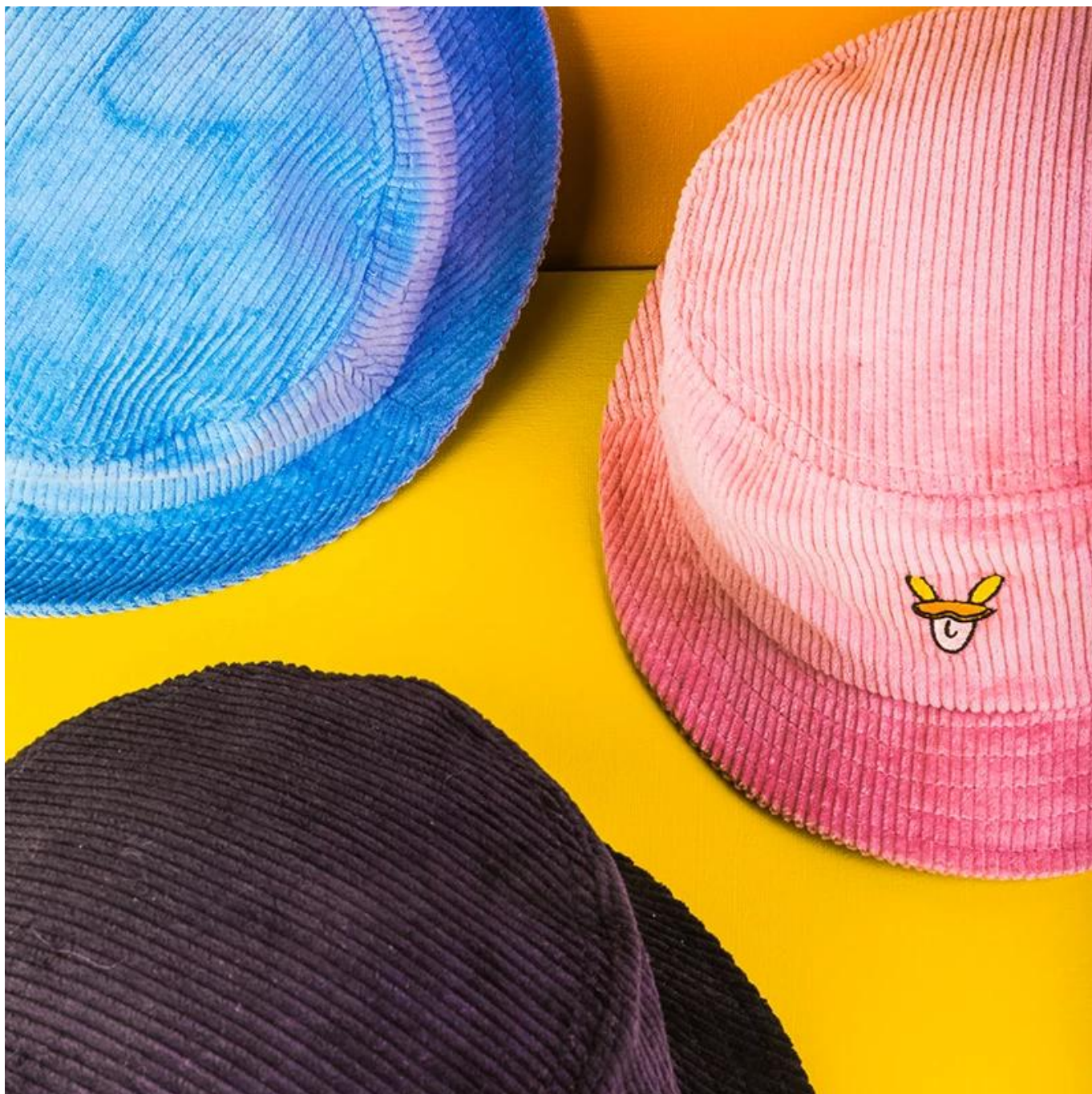
| Item | content | optional |
|--------------------|--|---|
| 1.Product Name | plain embroidery bucket hats corduroy vfacaps custom | |
| 2.Shape | constructed | Unconstructed or any other design or shape |
| 3.Material | custom | Other material: BIO-washed cotton, heavy weight brushed cotton, pigment dyed, Canvas, Polyester, Acrylic and etc |
| 4.Back Closure | custom | leather back strap with brass, plastic buckle, metal buckle, elastic, self-fabric back strap with metal buckle etc. And other kinds of back strap closure depend on your requirments. |
| 5.Visor | Flat | Soft or Hard Pre-curved |
| 6.Color | Custom color | Standard color available(special colors available on request, based on pantone color card) |
| 7.Size | 58cm | Normally,48cm-55cm for kids,56cm-60cm for adults |
| 8.Logo | 3D embroidery | Printing, Heat transfer printing, Applique Embroidery, 3D embroidery leather patch, woven patch, metal patch, felt applique etc. |
| 9.MOQ | 25pcs/color/design | |
| 10.Carton Size | 62cm*48cm*36cm | |
| 11.Packing | 25pcs/polybag/inner box,4 inner boxes/carton,100pcs/carton | |
| | 20" Container can contain 60,000pcs approximately | |
| | 40" Container can contain 12,000pcs approximately | |
| | 40" High Container can contain 13,000pcs approximately | |
| 12.Price Term | FOB | Basic price offer depends on final cap's quantity and quality |
| 13.Shipping Method | By sea or by air or express | |
| 14.Payment Terms | T/T,L/C,Western Union,Paypal etc. | |
| 15.Sample time | 4~7 days after we receive your sample fee | |

| | |
|------------------|--|
| 16.Sample fee | USD 30-50\$ for per piece. we will return the sample fee to you once you place order |
|------------------|--|

product description







Other bucket hat models you may like



About customization:

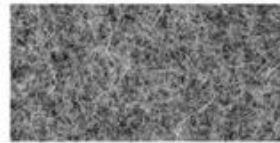
1. Our product price is pure clothing price, does not include printing fee. The specific price depends on the quantity you have customized and the content of printing. Please inform us of the style, printing content, printing position and quantity of your choice. We will help you to calculate the custom price and shipping time as quickly as possible.
2. We have our own printing workshop, embroidery workshop, etc. The craftsmanship is complete, we will inform you of the most suitable printing process when you receive your printed content.
3. Print content as much as possible to provide high-definition images, the clearer, the better the printing effect, too small and unclear to print out the effect is not beautiful enough.
4. After the order is placed, the construction period is usually 2-4 days. Please inform us of the urgent order, we will give priority to help you.

product description



COTTON CANVAS

Strong, rough, tightly woven cotton fabric



MELTON WOOL

Fine, soft, curly fabric with a distinct texture, look and feel



NYLON

Tough lightweight synthetic fiber based fabric, durable and flexible



DENIM

Ultra-thick cotton twill patterned fabric. Same material as blue jeans



CORDUROY

Thick cotton fabric with velvety ribs



ACRYLIC

Synthetic fiber based fabric. Often used for bucket hats



SUEDE

Soft leather with a napped exterior surface



HERRINGBONE

Classic wool patterned fabric. Great for any hat



FOAM

Soft porous material commonly used for sublimation or heat press.



TRUCKER MESH

Choose between firm or soft mesh as an option for any of the panels.



COTTON TWILL

Cotton fabric woven with diagonal parallel ridges



POLY-TWILL

Polyester fabric woven with diagonal parallel ridges



Cutting bed



Sewing Machine



Embroidering Machine



Scalding Machine



Eyelet Embroidering Machine



Edge Trimming Machine



Special Streamlined Lockstitch Machine



Sweatband Processing Machine

Brand story:

The functional hat "Aungcrown" brand was established in 1998, we analyze different kinds of customers' demands through researching data, focus on customers' experience, redefine the The functional hat "Aungcrown" brand was established in 1998, we analyze different kinds of customers' demands through researching data, focus on customers' experience, redefine the normal hats and create functional hats which are more easy carrying, easy wearing and well-matching.

AUNG CROWN



Canton Fair



MagicShow





If you want to know more or have any questions
feel free to contact us