

Product Description

- 100% Cotton
- THE HAT: □ CLASSIC FLAT BRIM COTTON SNAPBACK HAT. □ EXCELLENT QUALITY & DETAILED CONSTRUCTION. □ ADJUSTABLE SNAPBACK CLOSURE, GREAT FIT FOR MOST SIZES. □ GREAT UNISEX DESIGN FOR BOTH MEN & WOMEN. □ 6 PANEL STRUCTURE - ROUND FLAT BRIM VISOR. □
- PEERLESS BASICS: With superior fabric, innovative sizing, and unique colors, it's time to refill your hats drawer with these peerless basics. The look and feel of cotton meets modern performance
- STAY SAFE UNDER THE SUMMER SUN: Stop risking your health and safety by walking outdoors without adequate sun protection. Protect your skin from harmful UV rays and keep your hair out of your face and eyes by wearing this comfortable cap during all your outdoor activities. Made of breathable, 100% high quality cotton, it is the perfect companion for your active lifestyle
- MAKE AN AWESOME GIFT: Birthdays & holidays coming up? Available in many different styles & looks, these perfect hats make an excellent gifting idea for your friends and loved ones! Great for any season, the superior design promises a secure, tidy & comfortable fit every time
- WHY CUSTOMERS LOVE KBETHOS: □ As one of the top headwear choice for Amazon, KBETHOS is a headwear brand you can TRUST. □ With hundreds of styles & looks, it is a great & fun experience. □ Moreover, our customer support is unmatched and unbeatable. □ Contact us for anything! □ Warm your heads today! □







DONT TREAD ON ME





CUSTOM HEADWEAR

PICK THE FABRICS/ MATERIALS

Our custom hats can be made from many different fabrics or blends. Select the materials that best fit your style and design.



COTTON CANVAS

Strong, rough, tightly woven cotton fabric



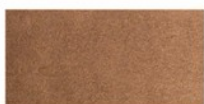
NYLON

Tough lightweight synthetic fiber based fabric, durable and flexible



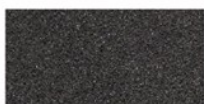
CORDUROY

Thick cotton fabric with velvety ribs



SUEDE

Soft leather with a napped exterior surface



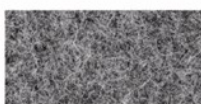
FOAM

Soft porous material commonly used for sublimation or heat press.



COTTON TWILL

Cotton fabric woven with diagonal parallel ridges



MELTON WOOL

Fine, soft, curly fabric with a distinct texture, look and feel



DENIM

Ultra-thick cotton twill patterned fabric. Same material as blue jeans



ACRYLIC

Synthetic fiber based fabric. Often used for bucket hats



HERRINGBONE

Classic wool patterned fabric. Great for any hat



TRUCKER MESH

Choose between firm or soft mesh as an option for any of the panels.



POLY-TWILL

Polyester fabric woven with diagonal parallel ridges

SELECT YOUR STYLE

SHOWN-STRUCTURED 6 PANEL | FLAT BILL
ACRYLIC | WOVEN LABEL



SUEDE/3D EMBROIDERY



SHOWN-STRUCTURED 6PANEL | FLAT BILL
ACRYLIC | LEATHER LABEL



SHOWN STRUCTURED 6 PANEL FLAT BILL 100%
POLYESTER 3D EMBROIDERED



OUR FACTORY

Production machinery



Cutting bed



Sewing Machine



Embroidering Machine



Scalding Machine



Eyelet Embroidering Machine



Edge Trimming Machine



Special Streamlined Lockstitch Machine



Sweatband Processing Machine

EXHIBITION

Every year we attend trade show to introduce our new products, make new connections with our clients and increase our sales.

We can learn anything new, keep our eyes in competition and improve our brand's image.

Canton
Fair



MagicShow



**If you want to know more or have any questions
feel free to contact us**

FAQ

Q1:Can i order samples with my own design & logo?

A1: Certainly you can.We can make it according to your requirement.

Q2:How much does the sample cost?

A2: we can make the samples for you with free charge including the simple artwork .

Q3:How long will it take for the sample and mass production?

A3:Generally speaking , we need 4-6days to finish the samples, while it will take longer time for some complex design. And the lead time for production will take 15-25days .

Q4:How's your after -sales service?

A4:with perfect after-sales service , your business is safe and your money is safe .

Q5:How's the order process?

A5: Confirm hat specifications - > confirm price - > proof - > confirm sample - > sign a contract, deposit payment and arrange bulk production - > finish production - > inspection (photo or real product) - > balance payment - > delivery - > after-sales service.