

Product Information

Product Name: [Blank]  
 Model No.: [Blank]  
 Material: [Blank]  
 Color: [Blank]  
 Size: [Blank]  
 Weight: [Blank]  
 Quantity: [Blank]

1. Product Name	[Blank]	[Blank]
2. Model No.	[Blank]	[Blank]
3. Material	[Blank]	[Blank]
4. Color	[Blank]	[Blank]
5. Size	[Blank]	[Blank]
6. Weight	[Blank]	[Blank]
7. Length	58cm	[Blank]48cm-55cm [Blank]56cm-60cm
8. Thickness	3D	[Blank]3D [Blank]
9. MOQ	25 pcs / carton	
10. Dimensions	62cm x 48cm x 36cm	
11. Packaging	25 pcs / polybag / inner box [Blank]4 [Blank] / carton [Blank]100 pcs / carton	
	20 [Blank] 60,000 [Blank]	
	40 [Blank] 12,000 [Blank]	
	40 [Blank] 13,000 [Blank]	
12. Terms	FOB	[Blank]
13. Payment	[Blank]	
14. Shipping	T / T L / C [Blank] Paypal [Blank]	
Lead Time	[Blank] 4-7 [Blank]	
Price	1 [Blank] USD 30-50 \$ [Blank]	

Notes:







# BUCKET HAT

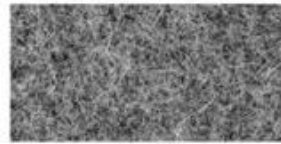
---







**COTTON CANVAS**  
Strong, rough, tightly woven cotton fabric



**MELTON WOOL**  
Fine, soft, curly fabric with a distinct texture, look and feel



**NYLON**  
Tough lightweight synthetic fiber based fabric, durable and flexible



**DENIM**  
Ultra-thick cotton twill patterned fabric. Same material as blue jeans



**CORDUROY**  
Thick cotton fabric with velvety ribs



**ACRYLIC**  
Synthetic fiber based fabric. Often used for bucket hats



**SUEDE**  
Soft leather with a napped exterior surface



**HERRINGBONE**  
Classic wool patterned fabric. Great for any hat



**FOAM**  
Soft porous material commonly used for sublimation or heat press.



**TRUCKER MESH**  
Choose between firm or soft mesh as an option for any of the panels.



**COTTON TWILL**  
Cotton fabric woven with diagonal parallel ridges



**POLY-TWILL**  
Polyester fabric woven with diagonal parallel ridges



Cutting bed



Sewing Machine



Embroidering Machine



Scalding Machine



Eyelet Embroidering Machine



Edge Trimming Machine



Special Streamlined Lockstitch Machine



Sweatband Processing Machine



အောင်ကွန်း Aungcrowne ၁၉၉၈ ခုနှစ်တွင် ဖွဲ့စည်းတည်ထောင်ခဲ့ပြီး ဖွဲ့စည်းတည်ထောင်ခဲ့ပြီး ဖွဲ့စည်းတည်ထောင်ခဲ့ပြီး  
အောင်ကွန်း Aungcrowne ၁၉၉၈ ခုနှစ်တွင် ဖွဲ့စည်းတည်ထောင်ခဲ့ပြီး ဖွဲ့စည်းတည်ထောင်ခဲ့ပြီး ဖွဲ့စည်းတည်ထောင်ခဲ့ပြီး  
အောင်ကွန်း Aungcrowne ၁၉၉၈ ခုနှစ်တွင် ဖွဲ့စည်းတည်ထောင်ခဲ့ပြီး ဖွဲ့စည်းတည်ထောင်ခဲ့ပြီး ဖွဲ့စည်းတည်ထောင်ခဲ့ပြီး

**AUNG CROWN**





# Canton Fair



# MagicShow





If you want to know more or have any questions  
feel free to contact us