

1. 產品名稱

請提供產品名稱及規格

數量

請提供數量及單位

單位

請提供單位

包裝

請提供包裝規格及數量 4-5 個

1. 產品名稱		
2. 數量		
3. 單位		
4. 包裝規格		
5. 數量		
6. 單位		
7. 尺寸	58cm	請提供 48cm-55cm 及 56cm-60cm
8. 厚度	3D	請提供 3D 厚度
9. MOQ	25 個/箱	
10. 包裝尺寸	62cm x 48cm x 36cm	
11. 包裝規格	25pcs / polybag / inner box 4 個裝 / carton 100pcs / carton	
	20 個裝 60,000 個	
	40 個裝 12,000 個	
	40 個裝 13,000 個	
12. 貿易條款	FOB	請提供貿易條款
13. 付款方式	請提供付款方式	
14. 其他	T / T / C / Paypal	
15. 其他	請提供其他資訊 4-7 個	
16. 其他	1 個 USD 30-50 \$ 請提供其他資訊	

2. 其他



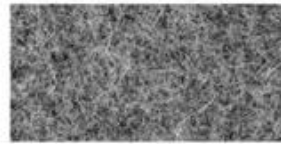




□□□□□□□□ □□□□□□□□□□□□□□



COTTON CANVAS
Strong, rough, tightly woven cotton fabric



MELTON WOOL
Fine, soft, curly fabric with a distinct texture, look and feel



NYLON
Tough lightweight synthetic fiber based fabric, durable and flexible



DENIM
Ultra-thick cotton twill patterned fabric. Same material as blue jeans



CORDUROY
Thick cotton fabric with velvety ribs



ACRYLIC
Synthetic fiber based fabric. Often used for bucket hats



SUEDE
Soft leather with a napped exterior surface



HERRINGBONE
Classic wool patterned fabric. Great for any hat



FOAM
Soft porous material commonly used for sublimation or heat press.



TRUCKER MESH
Choose between firm or soft mesh as an option for any of the panels.



COTTON TWILL
Cotton fabric woven with diagonal parallel ridges



POLY-TWILL
Polyester fabric woven with diagonal parallel ridges



Cutting bed



Sewing Machine



Embroidering Machine



Scalding Machine



Eyelet Embroidering Machine



Edge Trimming Machine



Special Streamlined Lockstitch Machine



Sweatband Processing Machine



1998
 1998
 1998

AUNG CROWN



Canton Fair



MagicShow





If you want to know more or have any questions
feel free to contact us