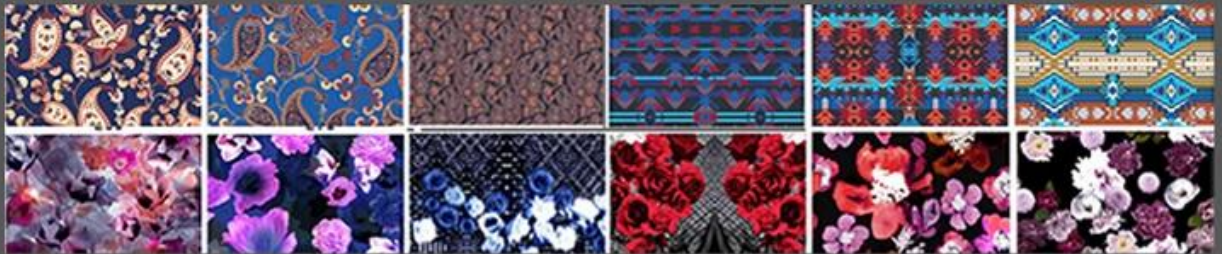


Item	optional
2.Shape	Unconstructed or any other design or shape
3.Material	Other material: BIO-washed cotton, heavy weight brushed cotton, pigment dyed, Canvas, Polyester, Acrylic and etc
4.Back Closure	Brass, Plastic, Velcro, Metal buckle, elastic. And any kind of back strap closure
5.Visor	Soft or Hard Pre-curved
6.Color	Solid colors: Forest, Mustard, Charcoal, Royal, Grape, Blue, Orange, White and Khaki, ETC. Two toned crown/bill colors: Khaki/Charcoal, Khaki/Blue, and Khaki/Green, ETC.
7.Size	Normally, 48cm-55cm for kids, 56cm-60cm for adults,
8.Logo	Printing, Heat transfer printing, Appliqué Embroidery, 3D embroidery etc.
9.MOQ	50 pcs
11.Packing	25pcs/polybag, 100pcs/carton 20" Container can contain 60,000pcs approximately 40" Container can contain 12,000pcs approximately 40" High Container can contain 13,000pcs approximately
12.Price Term	FOB Basic price offer depends on final cap's quantity and quality
13.Shipping Method	By sea or by air or express
14.Payment Terms	T/T, L/C, Western Union, Paypal.
15.Sample time	4~7 days after we receive your sample fee
16.Sample fee	USD30 for per piece. we will return the sample fee to you once you place order
17.Production Lead Time	15~20 days approx after your confirmation to pre-production samples

Fabric



Logo Process



Strap





customer



team



office



workshop

Aung Crown Caps & Hats Industrial Ltd. is direct manufacturer specializing in various hats such as snapback hats, 5 panel camp hat, bucket hat, winter beanie, baseball cap, military cap etc..

There, workers mostly have more than 10 years experience and special production lines are trained for top quality standard. We make sure every piece keep the same good quality no matter for sample or bulk!

Now and then we have customers visit us and the impression they have on us will be "AungCrown do care each detail even our-self do not expect before! That is great for my brand!" Sincerely hope you are the next witness!

With great pleasure and patience, our professional sales team are welcomed your contact of any questions or concerns!





**SHOWS
ON ABROAD**





**SHOWS
ON ABROAD**

