

“Any problems happened is ours, we take it and kill it.”



☐☐ ☐☐	☐☐☐☐☐☐6☐☐☐☐☐☐☐☐☐☐
☐☐	☐☐☐☐/☐☐☐☐☐☐
☐☐	☐☐☐☐/☐☐☐☐☐☐
☐☐	Paypal /☐☐☐☐☐ / T / T☐
☐☐☐☐	3-5☐☐☐☐☐☐
MOQ	50☐
☐☐	☐☐☐☐☐☐
☐☐	☐☐☐☐☐☐
☐☐	☐☐☐☐☐☐
☐☐	☐☐☐☐☐☐☐☐☐☐☐☐☐☐☐☐









## A LETTER TO OUR CUSTOMER



*Dear Customer,*

*A new year has been on its way with all moving smoothly and happily.*

*With your sincerely support and trust, we are more vigorous and confident.*

*Thanks again!*

*A group of young here, work together, help each other,*

*share experience and happiness on each day,*

*with the same mind strongly in heart that how to help you grow up,*

*how to help you to be successful, and how to help you to be more stronger.*

*Do you want one of them to help you?*

*Time flies with the world's step; hat has become one symbol of fashion culture.*

*To show people's happiness, belief, kindness.... It can be seen here and there.*

*It is our honor that we choose this line and share it to all over the world*

*with our elaborate work.*

*Not just to show a high quality hat, also the beliefs for spreading the cultural.*

*Welcome you to join this potential market at any time!*



Aung Crown Group.

SHOWN-STRUCTURED 6 PANEL | FLAT BILL  
ACRYLIC | WOVEN LABEL



SUEDE/3D EMBROIDERY



SHOWN-STRUCTURED 6PANEL | FLAT BILL  
ACRYLIC | LEATHER LABEL

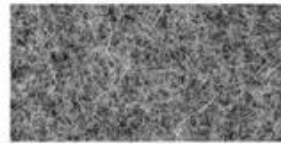


SHOWN STRUCTURED 6 PANEL FLAT BILL 100%  
POLYESTER 3D EMBROIDERED





**COTTON CANVAS**  
Strong, rough, tightly woven cotton fabric



**MELTON WOOL**  
Fine, soft, curly fabric with a distinct texture, look and feel



**NYLON**  
Tough lightweight synthetic fiber based fabric, durable and flexible



**DENIM**  
Ultra-thick cotton twill patterned fabric. Same material as blue jeans



**CORDUROY**  
Thick cotton fabric with velvety ribs



**ACRYLIC**  
Synthetic fiber based fabric. Often used for bucket hats



**SUEDE**  
Soft leather with a napped exterior surface



**HERRINGBONE**  
Classic wool patterned fabric. Great for any hat



**FOAM**  
Soft porous material commonly used for sublimation or heat press.



**TRUCKER MESH**  
Choose between firm or soft mesh as an option for any of the panels.



**COTTON TWILL**  
Cotton fabric woven with diagonal parallel ridges



**POLY-TWILL**  
Polyester fabric woven with diagonal parallel ridges





3D EMBROIDERY



2D EMBROIDERY



WOVEN KABEK PATCH/  
PRINT LABEL PATCH



WOVEN LABEL



WOVEN PATCH



LEATHER PATCH



SCREEN PRINTING



HEAT PRESS



APPLIQUE WITH  
TOWEL



PRINT CORK PATCH



METAL BADGE



SUBLIMATION



□□□□□□□□□□□□□□□□

□□□□□□□□□□□□□□□□

□□□□□□□□□□□□□□□□

□□□□□□□□□□□□□□□□; logo□□□□□□□□□□□□□□□□

□□□□□□□□□□□□□□□□

□□□□□□□□5-7□□□□□□□□15-20□□