

□□ □□

□□□□□□□□□□□□□□□□□□□□

□

□□□□□□□□□□□□□□□□□□□□□□□□□□□□□□□□

□□

□□□□□□□□□□□□□□□□□□□□□□□□□□□□□□□□

□□

□□□□□□□□□□□□□□□□□□□□□□□□□□□□□□□□4-5□□□□□□□□□□□□

□□	□□	□□□
1.□□□□	□□□□□□	□□□□□□VFA□□□□□□
2.□□	□□	□□□□□□□□□□□□
3.□□	□□	□□□□□□□□□□□□□□□□□□□□□□□□□□□□□□□□
4.□□	□□	□□□□□□□□□□□□□□□□□□□□□□□□□□□□□□□□□□□□□□
5.□□□	□□	□□□□□□
6.□□	□□□□□□	□□□□□□□□□□□□□□□□□□□□□□□□
7.□□	58□□	□□□□□□48cm-55cm□□□□56cm-60cm
8□□□	3D□□	□□□□□□□□□□□□□□□□□□□□□□□□□□□□□□□□
9□□□□	25□/□□/□□	
10.□□□□	62□□* 48□□* 36□□	
11□□□	25□/□□□/□□□4□□□/□□□100□/□□	
	20□□□□□□□□□□60,000□	
	40□□□□□□□□□□12,000□	
	40□□□□□□□□□□13,000□	
12□□□□□	□□□	□□□□□□□□□□□□□□□□
13.□□□□	□□□□□□□□	
14.□□□□	□□□□□□□□□□□□□□	Paypal□
15□□□□□	□□□□□□□□□□4□7□	
16□□□□	□□30-50□□□□□□□□□□□□□□□□	

□□□□





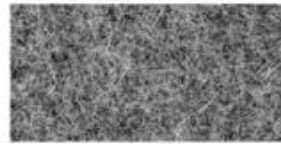


□□□□ □□□□□□



COTTON CANVAS

Strong, rough, tightly woven cotton fabric



MELTON WOOL

Fine, soft, curly fabric with a distinct texture, look and feel



NYLON

Tough lightweight synthetic fiber based fabric, durable and flexible



DENIM

Ultra-thick cotton twill patterned fabric. Same material as blue jeans



CORDUROY

Thick cotton fabric with velvety ribs



ACRYLIC

Synthetic fiber based fabric. Often used for bucket hats



SUEDE

Soft leather with a napped exterior surface



HERRINGBONE

Classic wool patterned fabric. Great for any hat



FOAM

Soft porous material commonly used for sublimation or heat press.



TRUCKER MESH

Choose between firm or soft mesh as an option for any of the panels.



COTTON TWILL

Cotton fabric woven with diagonal parallel ridges



POLY-TWILL

Polyester fabric woven with diagonal parallel ridges



Cutting bed



Sewing Machine



Embroidering Machine



Scalding Machine



Eyelet Embroidering Machine



Edge Trimming Machine



Special Streamlined Lockstitch Machine



Sweatband Processing Machine

“Aungcrown” 1998 “Aungcrown” 1998

AUNG CROWN



Canton Fair



MagicShow





If you want to know more or have any questions
feel free to contact us