

# BUCKET HAT



1. 100% POLYESTER  
 2. 100% POLYESTER  
 3. 100% POLYESTER  
 4. 100% POLYESTER  
 5. 100% POLYESTER  
 6. 100% POLYESTER  
 7. 100% POLYESTER  
 8. 100% POLYESTER

Item	Material	Description
1. Item Name		Bucket Hat
2. Shape	Bucket Hat	Bucket Hat
3. Material	100% Polyester	100% Polyester : Eco-friendly BIO material, breathable, and easy to clean.
4. Features	100% Polyester	Bucket Hat with a wide brim, perfect for sun protection and outdoor activities.
5. Visor	100% Polyester	Bucket Hat with a wide brim, perfect for sun protection and outdoor activities.
6. COLOR	Blue and White	Blue and White (Eco-friendly material, easy to clean)
7. Size	58CM	48 - 55cm, 56 - 60cm
8. LOGO	3 Buttons	3 Buttons, Eco-friendly material, easy to clean

9.MOQ	25PCS / <input type="text"/> / <input type="text"/>	
10. <input type="text"/> <input type="text"/>	62CM * 48CM * 36CM	
11.Packing	25pcs / polybag / 100 <input type="text"/> <input type="text"/> / <input type="text"/> <input type="text"/> 4 <input type="text"/> <input type="text"/> pcs / carton	
	<input type="text"/> <input type="text"/> <input type="text"/> 60000 <input type="text"/> <input type="text"/> 20 <input type="text"/> <input type="text"/> <input type="text"/> <input type="text"/>	
	<input type="text"/> <input type="text"/> <input type="text"/> 12000 <input type="text"/> <input type="text"/> 40 <input type="text"/> <input type="text"/> <input type="text"/> <input type="text"/>	
	<input type="text"/> <input type="text"/> <input type="text"/> 13000 <input type="text"/> <input type="text"/> 40 <input type="text"/> <input type="text"/> <input type="text"/> <input type="text"/>	
12. <input type="text"/> <input type="text"/>	FOB	<input type="text"/> <input type="text"/> <input type="text"/> <input type="text"/> <input type="text"/> <input type="text"/> <input type="text"/> <input type="text"/>
13 <input type="text"/> <input type="text"/>	<input type="text"/> <input type="text"/> <input type="text"/> <input type="text"/> <input type="text"/> <input type="text"/> <input type="text"/> <input type="text"/>	
<input type="text"/> 14.Payment	t / t <input type="text"/> / c <input type="text"/> <input type="text"/> <input type="text"/> <input type="text"/> paypal <input type="text"/> .	
15 <input type="text"/> <input type="text"/>	4 ~ 7 <input type="text"/> <input type="text"/> <input type="text"/> <input type="text"/> <input type="text"/> <input type="text"/>	
16 <input type="text"/> <input type="text"/>	30-50 <input type="text"/> <input type="text"/> <input type="text"/> <input type="text"/> <input type="text"/> <input type="text"/> . <input type="text"/> <input type="text"/> <input type="text"/> <input type="text"/>	





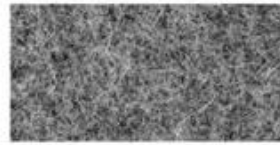


بوك آخرقبعة النماذج التي قد تعجبك





**COTTON CANVAS**  
Strong, rough, tightly woven cotton fabric



**MELTON WOOL**  
Fine, soft, curly fabric with a distinct texture, look and feel



**NYLON**  
Tough lightweight synthetic fiber based fabric, durable and flexible



**DENIM**  
Ultra-thick cotton twill patterned fabric. Same material as blue jeans



**CORDUROY**  
Thick cotton fabric with velvety ribs



**ACRYLIC**  
Synthetic fiber based fabric. Often used for bucket hats



**SUEDE**  
Soft leather with a napped exterior surface



**HERRINGBONE**  
Classic wool patterned fabric. Great for any hat



**FOAM**  
Soft porous material commonly used for sublimation or heat press.



**TRUCKER MESH**  
Choose between firm or soft mesh as an option for any of the panels.



**COTTON TWILL**  
Cotton fabric woven with diagonal parallel ridges



**POLY-TWILL**  
Polyester fabric woven with diagonal parallel ridges



Cutting bed



Sewing Machine



Embroidering Machine



Scalding Machine



Eyelet Embroidering Machine



Edge Trimming Machine



Special Streamlined Lockstitch Machine



Sweatband Processing Machine





**SHOWN-STRUCTURED 6 PANEL | FLAT BILL  
ACRYLIC | WOVEN LABEL**



**SUEDE/3D EMBROIDERY**



**SHOWN-STRUCTURED 6PANEL | FLAT BILL  
ACRYLIC | LEATHER LABEL**



**SHOWN STRUCTURED 6 PANEL FLAT BILL 100%  
POLYESTER 3D EMBROIDERED**



## A LETTER TO OUR CUSTOMER



*Dear Customer,*

*A new year has been on its way with all moving smoothly and happily.*

*With your sincerely support and trust, we are more vigorous and confident.*

*Thanks again!*

*A group of young here, work together, help each other,*

*share experience and happiness on each day,*

*with the same mind strongly in heart that how to help you grow up,*

*how to help you to be successful, and how to help you to be more stronger.*

*Do you want one of them to help you?*

*Time flies with the world's step; hat has become one symbol of fashion culture.*

*To show people's happiness, belief, kindness.... It can be seen here and there.*

*It is our honor that we choose this line and share it to all over the world*

*with our elaborate work.*

*Not just to show a high quality hat, also the beliefs for spreading the cultural.*

*Welcome you to join this potential market at any time!*



Aung Crown Group.

**If you want to know more or have any questions  
feel free to contact us**