









# BUCKET HAT

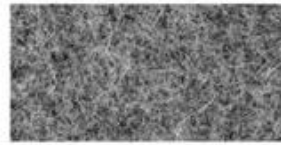
---







**COTTON CANVAS**  
Strong, rough, tightly woven cotton fabric



**MELTON WOOL**  
Fine, soft, curly fabric with a distinct texture, look and feel



**NYLON**  
Tough lightweight synthetic fiber based fabric, durable and flexible



**DENIM**  
Ultra-thick cotton twill patterned fabric. Same material as blue jeans



**CORDUROY**  
Thick cotton fabric with velvety ribs



**ACRYLIC**  
Synthetic fiber based fabric. Often used for bucket hats



**SUEDE**  
Soft leather with a napped exterior surface



**HERRINGBONE**  
Classic wool patterned fabric. Great for any hat



**FOAM**  
Soft porous material commonly used for sublimation or heat press.



**TRUCKER MESH**  
Choose between firm or soft mesh as an option for any of the panels.



**COTTON TWILL**  
Cotton fabric woven with diagonal parallel ridges



**POLY-TWILL**  
Polyester fabric woven with diagonal parallel ridges



Cutting bed



Sewing Machine



Embroidering Machine



Scalding Machine



Eyelet Embroidering Machine



Edge Trimming Machine



Special Streamlined Lockstitch Machine



Sweatband Processing Machine





# Canton Fair



# MagicShow





If you want to know more or have any questions  
feel free to contact us