

👑 aungcrown

👑 Aungcrown👑

👑

👑 .

👑

👑

👑

👑 5-4

👑	👑	👑
1. 📏		👑
2.Shape	👑	👑
3.Material	👑	👑
4.Back	👑	👑
5.Visor	👑	👑
6.COLOR	👑	👑
7.Size	58CM	👑 60- 👑 56 👑 55- 👑 48
8.LOGO	3	3
9.MOQ	25PCS /	
10. 📏	62CM * 48CM * 36CM	
11.Packing	25 📏 / 100 📏 / 4 📏	
	📏 60000 📏 20 📏	
	40 "12000 📏 pcs	
40 "13000 📏 pcs		
12. 📏	FOB	👑
13. 📏	👑	
14. 📏	t / t c	paypal
15. 📏	4 ~ 7	

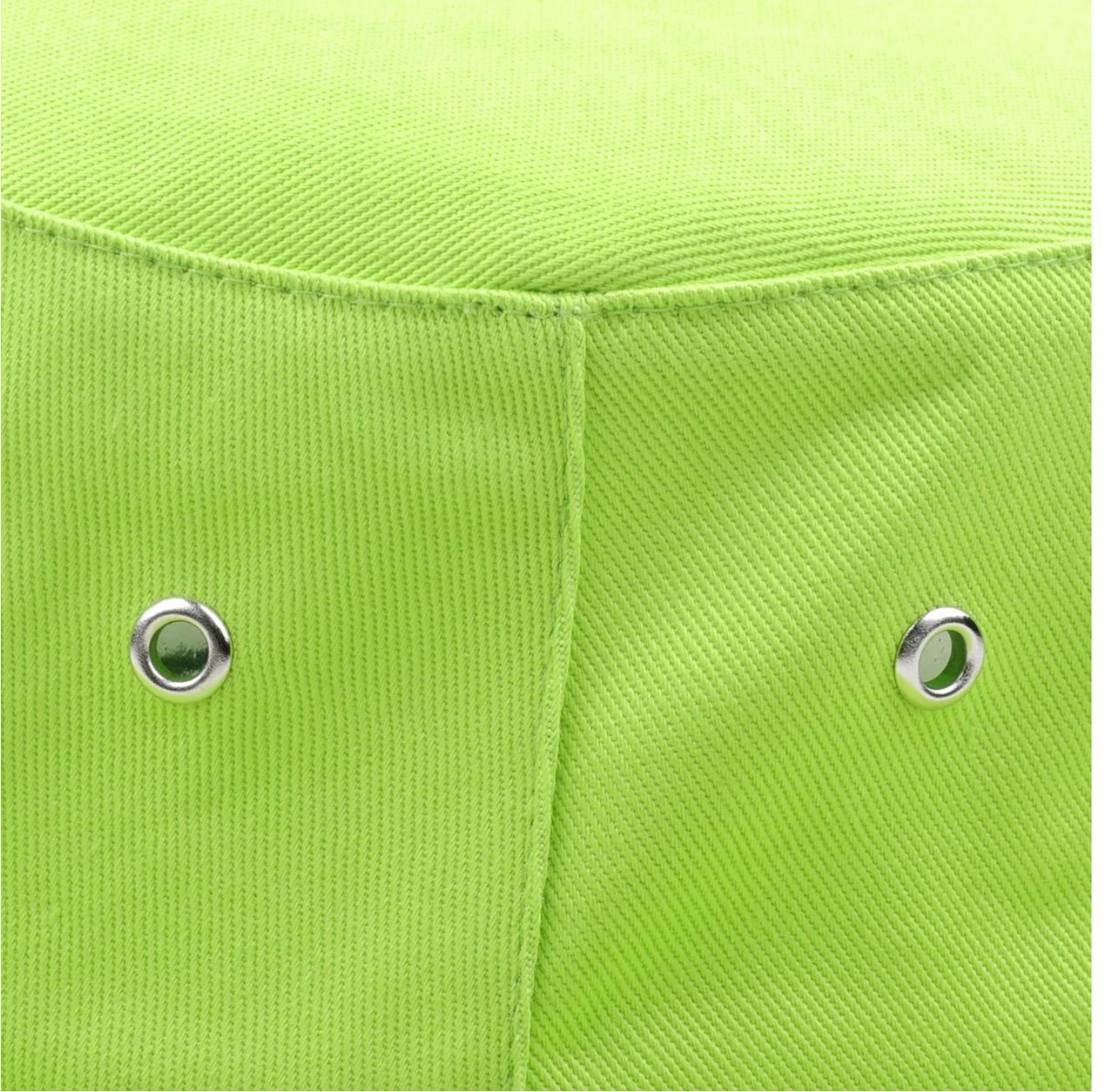
16. 0000
000000

30-50 000000 0000 000000 00 000000 000000 000000 .00000000 00000000 00000000 000000

00000000 0000



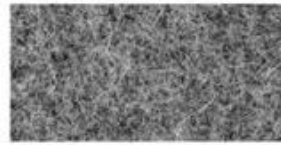




بوكه أخرى تي قبعة النماذج التي قد ترغب



COTTON CANVAS
Strong, rough, tightly woven cotton fabric



MELTON WOOL
Fine, soft, curly fabric with a distinct texture, look and feel



NYLON
Tough lightweight synthetic fiber based fabric, durable and flexible



DENIM
Ultra-thick cotton twill patterned fabric. Same material as blue jeans



CORDUROY
Thick cotton fabric with velvety ribs



ACRYLIC
Synthetic fiber based fabric. Often used for bucket hats



SUEDE
Soft leather with a napped exterior surface



HERRINGBONE
Classic wool patterned fabric. Great for any hat



FOAM
Soft porous material commonly used for sublimation or heat press.



TRUCKER MESH
Choose between firm or soft mesh as an option for any of the panels.



COTTON TWILL
Cotton fabric woven with diagonal parallel ridges



POLY-TWILL
Polyester fabric woven with diagonal parallel ridges



Cutting bed



Sewing Machine



Embroidering Machine



Scalding Machine



Eyelet Embroidering Machine



Edge Trimming Machine



Special Streamlined Lockstitch Machine



Sweatband Processing Machine

Canton Fair



MagicShow





If you want to know more or have any questions
feel free to contact us